

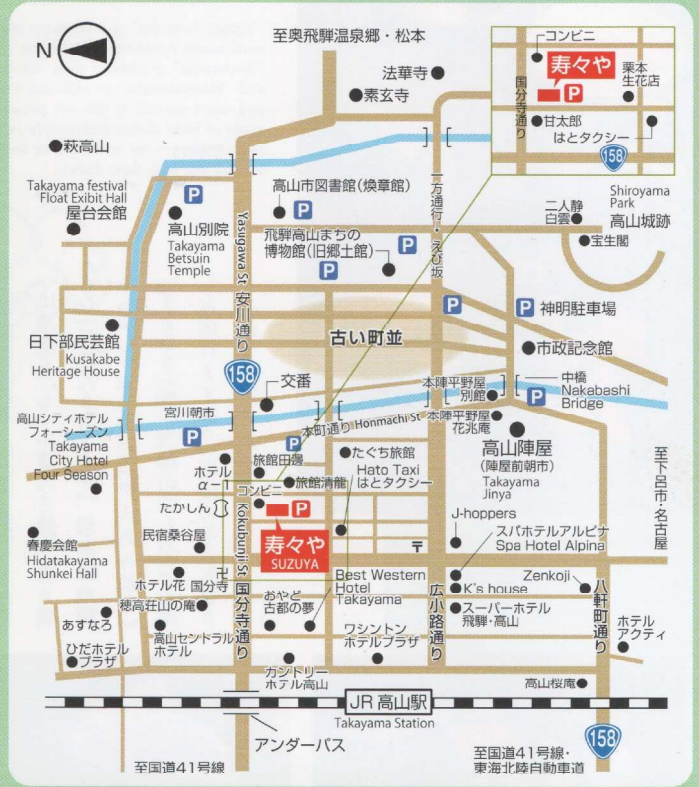
民芸食事
寿々や



SUZUYA



朴葉味噌ステーキ
Houbamiso Steak



山菜・飛騨牛・朴葉みそ
寿々や
SUZUYA

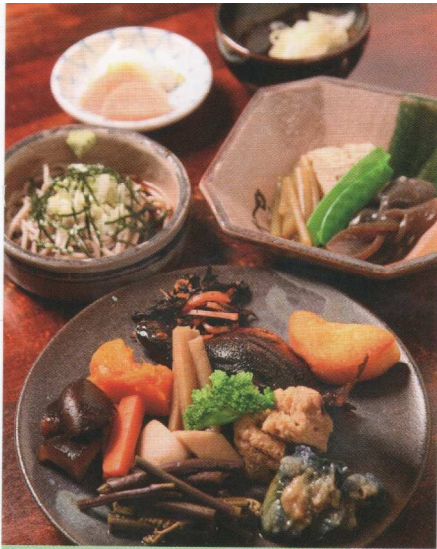
高山市花川町24
TEL(0577)32-2484

駐車場/5台、定休日/火曜日(不定休)
営業時間/昼11時~、夜17時~
<http://www7.ocn.ne.jp/~suzu-ya/>



YouTube

24, Hanakawacho, Takayama-city, Gifu, Japan. Closed on Tuesdays. Lunch 11:00AM~ Dinner 17:00PM~



飛騨のおばんざい
Obanzai of Hida-Takayama

"Sansai Teishoku" or wild plants table d'hôte with much mountain and fluvial products, "Houbamiso" or pastoral miso, "Shabu-Shabu" and "Misotakinabe" or selected vegetables and meat served in the hot pot, and other kinds of Hida dishes elaborately relished to each season -- we are looking forward to serving you with these dishes.

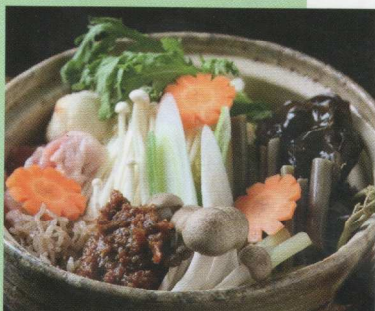
飛騨の山の幸、川の幸を取り入れた「山菜定食」や「山菜みそ鍋」、香り豊かな「朴葉みそステーキ」、最高級飛騨牛の「しゃぶしゃぶ」「炭火あみ焼き」「すきやき」等、飛騨の味を充分お楽しみ頂きますよう、皆様のお立ち寄りを心からお待ちしております。

民芸食事の店「寿々や」は古い伝統が生んだ飛騨高山の堅牢で無駄のない健康的な美しさを建築様式に縮尺して建てました。それは飛騨高山をおとすれて下さいましたお客様に手近に見て頂き又雰囲気味わっていただきたいです。

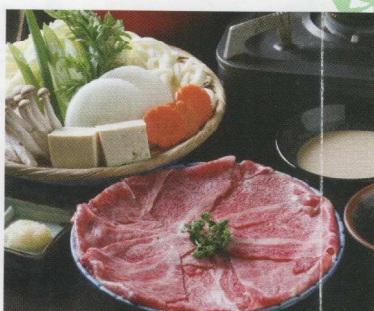
高山の古民家を再現した格調ある雰囲気と心をこめた料理で楽しいひとときをお過ごしください

The premises in which "Suzuya" folk restaurant is set are scaled-down models of solid, integrate, sound and beautiful houses completed through generations in this Hida Takayama district. For we want you to appreciate the architectural masterpieces of Hida Takayama and enjoy the atmosphere that comes out of them.

Simple and clean interior with minimum decorations will make you feel calm and relaxed while you are sitting at table.



山菜味噌鍋
Edible wildplant Misonabe



しゃぶしゃぶ
Shabu-Shabu



高山の古民家を再現した店内
The shop which reproduced the old private house of the Hida-Takayama